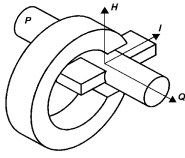


CMI Novacast Inc



*The company that is making the news,
Is sharing the news!!*

Look, Ma!

No Moving Parts!

Have you ever wondered, "How does this pump work?" Well, it really isn't rocket science, even though one of the first patents had the name of Albert Einstein! So, with a basic understanding, you can appreciate the principles that put the metal where you want it!

For you engineer types, here's how our standard hand-out sheet describes the action: In physics, LaPlace's Law describes the interaction between a magnetic field and an electric current when they are applied at right angles to each other and to a conductor of electricity. This is better known as Fleming's Left Hand '3 Finger' Rule, in which the thumb, forefinger and middle finger of the left hand are positioned at right angles to each other. The thumb is the resulting force acting on the conductor when the forefinger is pointing up in the direction of the magnetic field, and the middle finger pointing right is the DC current. A direct current is applied by an external source, such as a battery.

For us average folks to understand this, it helps to first drink a large cup of coffee, and take a deep breath. Ok, here we go. Our pump uses alternating current for both the current in the conductor and to produce the magnetic field. A primary coil wraps around a pole piece which also passes through a loop of molten metal. The loop is formed by passages in the pump ceramics and is connected to the metal bath. A second pole piece with two smaller coils produces an alternating magnetic field at 90 degrees to the first. The resulting interaction between the magnetic field and the current flowing in the aluminum forces the metal in the third direction. This is where the discharge is placed, and the metal is pumped without turbulence into the mold. Easy, huh?

Further descriptions and illustrations are available on our website, www.cminovacast.com. Check it out!

Below, please take a look at our recipe for easy care of the laundry part of the system. Feel free to copy and post in your shop!

LAUNDRY MAINTENANCE SCHEDULE

TASK	DAILY	WEEKLY	MONTHLY	OTHER
Remove laundry from pump and "rod out" to remove dross. Replace gaskets at same time.		X		
Check for leaks at gaskets / joints	X			
Check for good temperature readings on heater controls.	X			
Check amperage draw on each section.	X			
If system is equipped with pressure probe, clean probe inlet inside elbow		X		
Check spring compression at laundry clamps. Springs should be nearly fully compressed when laundry is at normal operating temperature.		X		Upon Changing Components
Check all fasteners for sufficient tightness.			X	
Check for nitrogen leaks in complete pressure probe system.		X		

***Our customers are
a special breed!***

Not everyone

- *can see the benefits of pumping*
- *can be forward-looking*
- *can break 'out of the mold' and change their ways...*

***You are the forerunners
of our industry!!
Congratulations!***

A Special Thanks

We owe a very special thank you to the folks in Europe who went out of their way to make our stay most enjoyable during our June visit.

First of all, a very warm thank you to our guides, interpreters, and delightful hosts at Cidaut, in Valladolid, Spain, Jose Antonio Morato Soto, Rafael Cuesta Barbado, and Daniel Moringo Sotelo. After an extremely enlightening tour of their state-of-the-art research facilities, they treated us to a taste of Spain! We were invited into a private dinner, and a personally guided tour of the *Bodega*. It was a wonderful trip into the heart of Spain, and we felt very privileged. Antonio, Rafael, and Daniel, you were very good to us, and we welcome the chance to respond in kind, when you visit Illinois!

Certainly, a gracious thank you is owed to the hosts of our bed & breakfast in Dusseldorf, Germany, Marlies & Reinhard Schmidt, and their delightful son, Martin. We would never consider seeing Germany without first contacting them! Besides a place to lay our heads, they offered many services to us, including door-to-door taxi, restaurant suggestions, sightseeing maps, and lively conversation! I especially enjoyed the 'international' evening which was hosted by Marlies. And we were never allowed to leave the house without a full breakfast, to start the

day out right! Thank you, folks, we're looking forward to our next visit, and hope you will make a trip to the USA soon!

ON THE GROW!

Our numbers are growing... and changing

New papa, Marcelino Lara, the head of our machine shop, proudly introduced his son, David, to the world on September 28, 2003. The baby promises to be as handsome as his father!

New secretary, Judy Young, started with us this month. We are looking forward to working with her, and sharing many happy hours battling the computers... Are we having fun yet, Judy?

Barbara Whitfield, our previous secretary, has taken a position with another firm in the area. We know you will do great, Barb! And thanks for everything.

And last, but not least, VP Ed Lichner's beautiful wife, Amy, had an equally beautiful baby girl on Oct. 30, 2003. They have named her Sophia.

Best Wishes to all our new parents! And to Judy! We are all in for some exciting times!!!

HAPPY HOLIDAYS TO ALL!

HAPPY NEW YEAR!

CMI NOVACAST INC

190 Kelly Street

Elk Grove Village IL 60007 USA

847-640-6668

Fax 847-640-9079

www.cminovacast.com

sales@cminovacast.com